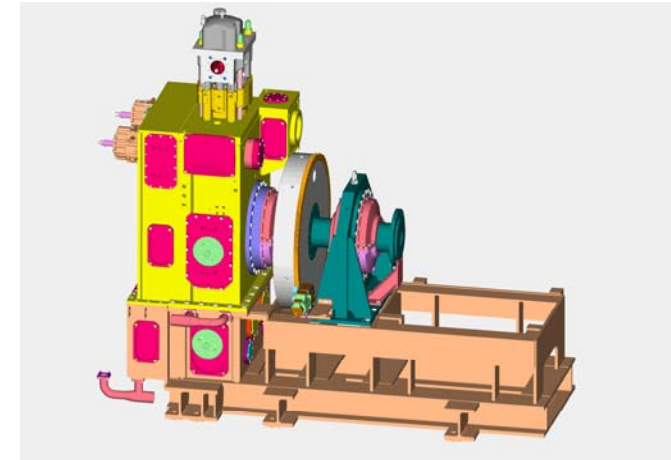


# TASK 1.2: Thermodynamics of engine with extreme design parameters

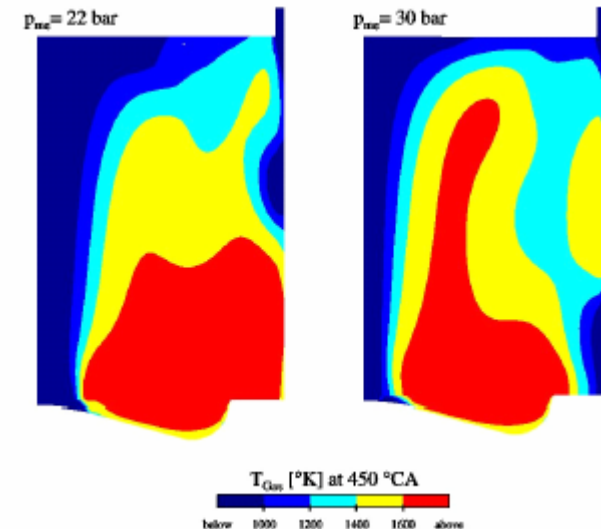
**Objectives:** To investigate operation of 2-S and 4-S engines under extreme thermal and mechanical load, design new components and test them full-scale

## Progress Highlights:

- Cycle simulations and parameter variations → Thermodynamic layout completed
- CFD pre-calculations complete
- New components (bearing shells, piston rings, fuel valves) design complete
- Engine design and FEM models (combustion chamber components) nearly complete
- Production of test items and prototype components in progress



Model of the test engine for experiments



Partners:

