



HERCULES Task 1.2 Status and Progress, March 2006



MAN B&W Diesel

Prototype test 2-stroke engine

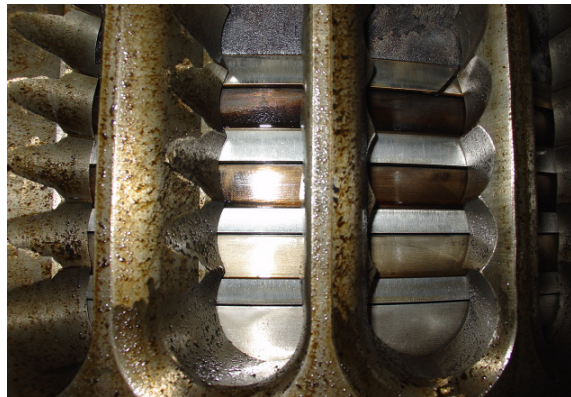
Liquid cooled
exhaust valve spindle



New top piston ring



Compound fuel
valve nozzle



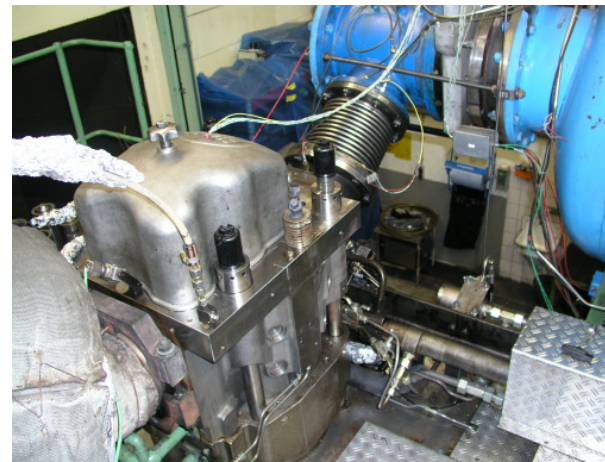
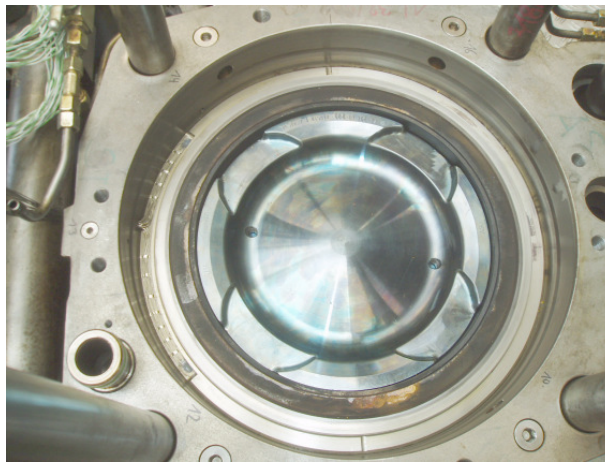
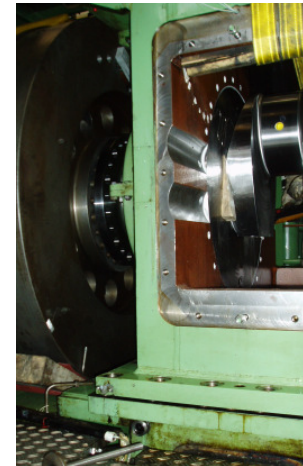


MAN B&W Diesel

HERCULES Task 1.2 Status and Progress, March 2006



Prototype test 4-stroke engine



Building up of the test engine with new components and mounting on the test bed.