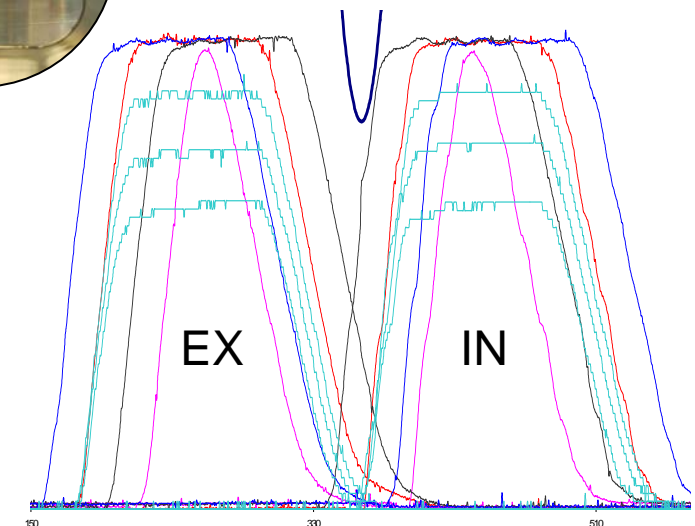
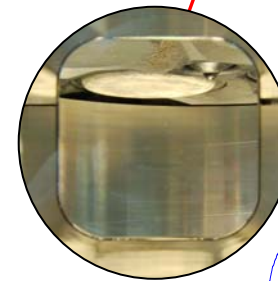
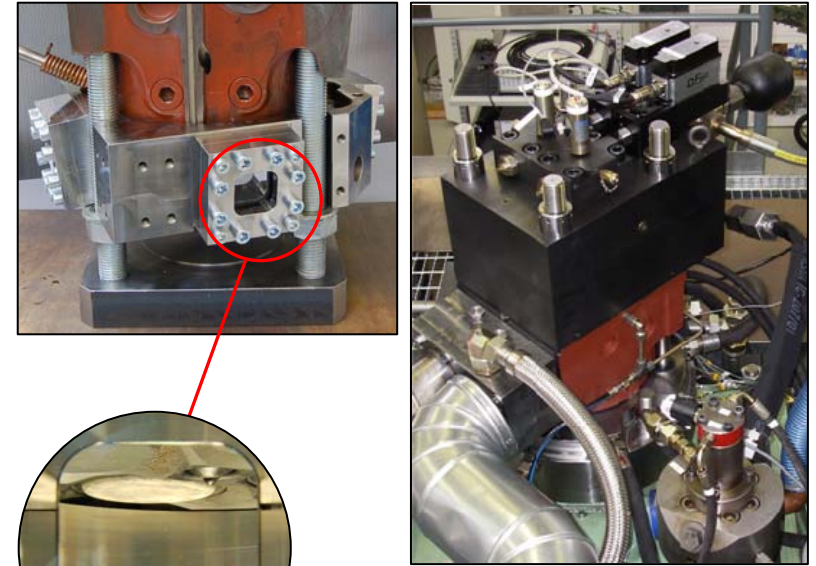


TASK 1.1: Mechanics of engine with extreme design parameters

Objectives: To study the operation of engine under extreme conditions, design new components and test them on a research Extreme Value Engine (EVE) at HUT

Progress Highlights:

- New components (cylinder head, hydraulic valve actuators) for EVE installed and tested
- Approximately 30 running hours completed
- New engine control software
- Optical components ready for testing
- Cylinder liner Sectional Bimetallic Casting (SBC) research ongoing
- Test bearings manufactured, rig testing ongoing



Partners:



HELSINKI UNIVERSITY OF TECHNOLOGY
Department of Mechanical Engineering



M. JÜRGENSEN
FLENSBURG



TAMPERE UNIVERSITY OF TECHNOLOGY



I.P. HERCULES

Partners Forum, Copenhagen 5/10/2006